



MIGRATION INFORMATION AND DATA ANALYSIS SYSTEM

**A COMPREHENSIVE AND AFFORDABLE
BORDER MANAGEMENT INFORMATION SYSTEM**



International Organization for Migration (IOM)

The UN Migration Agency

THE INTERNATIONAL ORGANIZATION FOR MIGRATION (IOM)

Established in 1951, the United Nations International Organization for Migration (IOM) is the leading intergovernmental organization in the field of migration management and works closely with governmental, intergovernmental and non-governmental partners.



Developed by the International Organization for Migration (IOM) in 2009, the Migration Information and Data Analysis System (MIDAS) is a high-quality, user-friendly and fully customizable Border Management Information System (BMIS) for States in need of a cost-effective and comprehensive solution. Currently operational in countries across Africa, Asia and the Americas, MIDAS has been designed to be compliant with international standards (ICAO and ISO).

With the capability to collect, process, store, and analyse traveller information in real time and across an entire border network, MIDAS enables States to more effectively monitor those entering and exiting their territory while providing a sound statistical basis for migration policy-related planning. IOM ensures that governments have full and exclusive ownership of any data recorded by MIDAS.

Given IOM's status as a non-profit making international organization, MIDAS is a cost-effective alternative to more

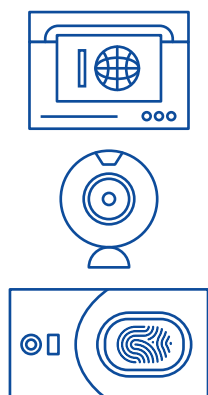
expensive commercial options. IOM provides expert guidance throughout the installation process, including the delivery of systems administration training workshops and the provision of post-project support to ensure MIDAS' sustainability.

MIDAS IN PRACTICE

MIDAS automatically captures traveller's biographic and biometric data through the use of document readers, webcams and fingerprint readers. This automation of data collection allows for faster and more accurate capture of information - alleviating the workload at borders.

Data captured by MIDAS includes:

- **Biographic data.**
- **Biometric data (photographs and fingerprints).**
- **Travel document images examined under Infrared, Ultraviolet and White Light.**
- **Entry and exit data.**
- **Visa data.**
- **Vehicle/flight/vessel data.**

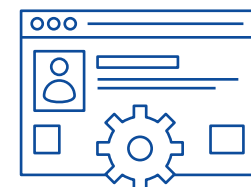


MIDAS Mobile Kit. The MIDAS Mobile Kit, consisting of a ruggedized tablet, portable document reader and fingerprint scanner, ensures that immigration officials can continue collecting traveller information in remote, logistically challenging locations, such as on-board vessels, aircraft and coaches.

MIDAS INTEROPERABILITY AND ADAPTABILITY

MIDAS is completely customizable and can be tailored to the specific requirements of governments. MIDAS can...

- Extract information from **Advance Passenger Information (API)**'s system messages ('Batch API'), check the data against an Alert List, and import the flight details and passenger list into the MIDAS database before the flight arrives.
- Be linked to the **MIDAS E-Visa platform** or an external E-Visa solution. The MIDAS E-Visa platform is fully integrated with the system.
- Use a **barcode scanner and printer** to easily collect traveller data of cross border communities who do not possess a valid machine readable travel document. In addition, MIDAS can print out a personalised barcode to be placed in the travel document.
- Be **interconnected to other BMIS**. If requested by a Government, an automated process transfers traveller data between the two systems to one central database to ease data collection and improve border security.
- Verify national travel documents against **a national passport and ID-card database** to confirm issuance by the relevant Government.



MIDAS AND

Border Security

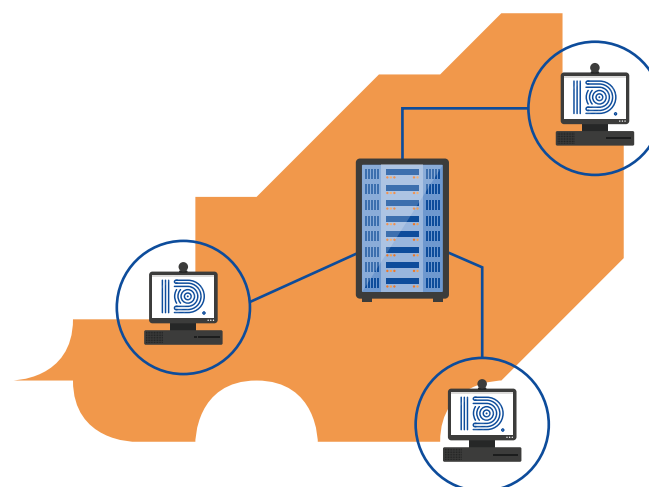
MIDAS automatically checks all recorded entry and exit data against national and INTERPOL Alert Lists. This feature contributes towards ensuring that those attempting to cross the border do not pose a threat to national or international security and, additionally, are not using stolen or lost travel documents.

Managing Migration

MIDAS can also be used to assist with managing in-country immigration and migration functions such as the recording and management of cases and the issuance of residence, employment and other types of permits.

Exchanging Data

MIDAS-equipped border crossing points can be connected to a central server to ensure that the collected traveller data is shared between all border crossing points in real time. The system is powered and connected according to specific local conditions, making it possible for the system to be installed in areas with poor or intermittent connectivity.



Analysing Data

MIDAS allows the user to create different reports according to the types of traveller data needed, such as country of origin, age, gender, travel purpose or whether the person has been detected in an Alert List. Processing and analysing the collected data will contribute towards a more complete understanding of a country's migration dynamics and mobility patterns. Data extracted from MIDAS can thus serve as the basis for the development of well-founded evidence-based migration policies.

Data Protection. Robust data protection is paramount for the safe exchange, secure storage and confidential management of personal data. Although IOM has no access to any of the data collected by MIDAS, we advise governments on how to implement the necessary institutional, technical and physical safeguards to strengthen current data protection practices in line with international standards.

MIDAS OPERATIONS AT THE BORDER CROSSING POINT

BEFORE ARRIVAL AT BORDER CROSSING POINT (BCP)

TRAVELER ENTRY / EXIT

MIDAS BCP
AIR / LAND / PORT

LOCAL SERVER
AT BCP

CENTRAL SERVER
AT HQ

AUTOMATED
DATA EXCHANGE

Before the traveler arrives at a border crossing point, MIDAS is able to check incoming Advanced Passenger Information (API) data against national and/or international Alert lists.

In case of a match:
SECONDARY INSPECTION

CHECK AGAINST
NATIONAL ALERT LIST

CHECK AGAINST
INTERPOL ALERT LIST

SCAN TRAVEL
DOCUMENT

RECORD AND/OR
CHECK VISA DATA +
PRINT VISA STICKER

CHECK DATA AND
AUTHENTICATE TRAVEL
DOCUMENT

RECORD VEHICLE /
FLIGHT / VESSEL DATA

TAKE PHOTO
(BIOMETRIC DATA)

CAPTURE
FINGERPRINT
(BIOMETRIC DATA)

LOCAL DEPOSITORY OF
ALL TRAVELER DATA

CREATE REPORTS BASED
ON STATISTICAL DATA

QUERY AGAINST
MIDAS DATABASE

CENTRAL DEPOSITORY OF ALL TRAVELER DATA

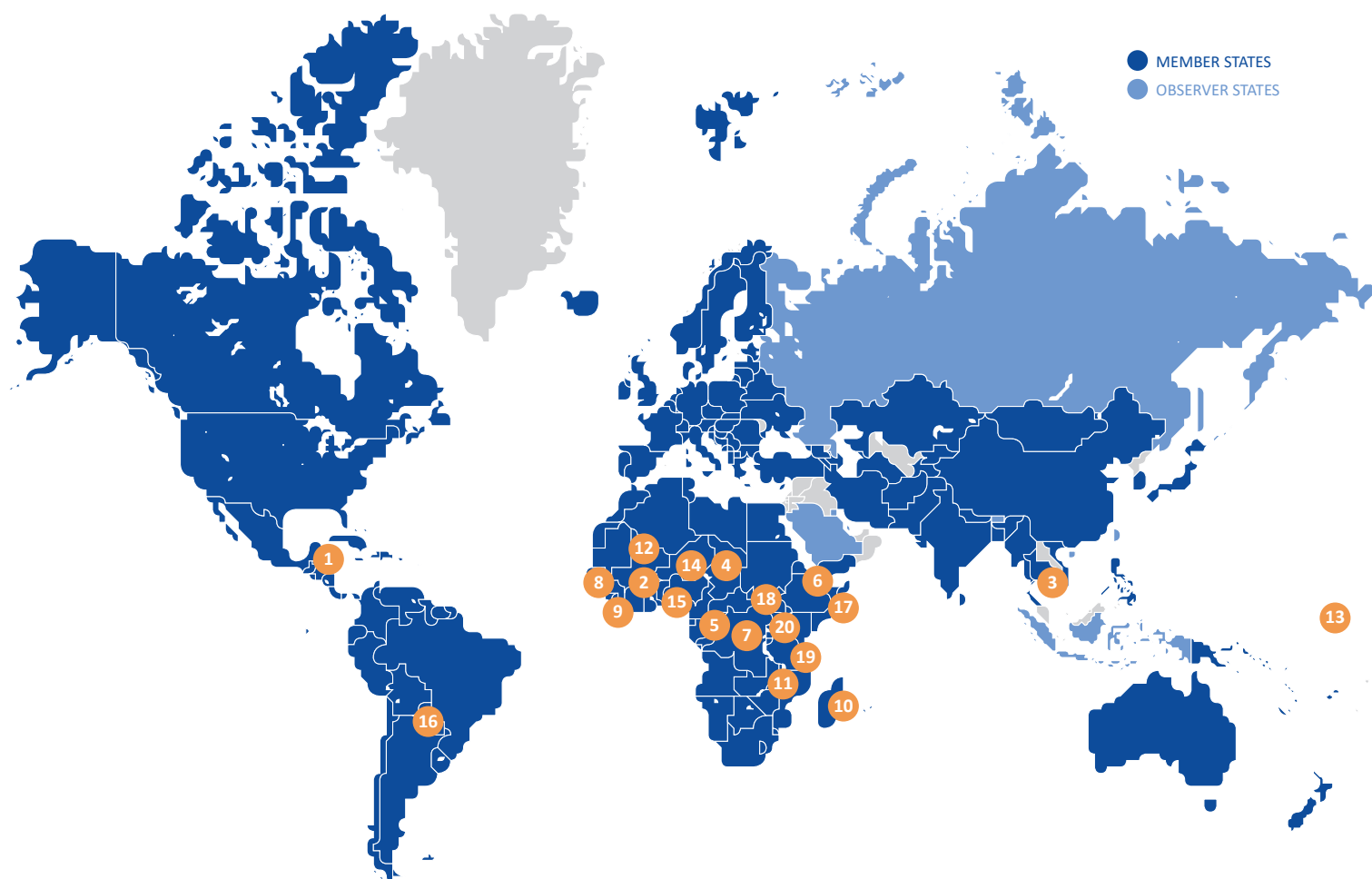
CREATE REPORTS BASED
ON STATISTICAL DATA

STANDARD AND CUSTOM
REPORTING TEMPLATES

QUERY AGAINST
MIDAS DATABASE



IOM MEMBER STATES. From 67 in 1998 to 169 Member States in 2018.



COUNTRIES USING MIDAS

- | | |
|-----------------|----------------------|
| 1. Belize | 11. Malawi |
| 2. Burkina Faso | 12. Mali |
| 3. Cambodia | 13. Marshall Islands |
| 4. Chad | 14. Niger |
| 5. Congo | 15. Nigeria |
| 6. Djibouti | 16. Paraguay |
| 7. DRC | 17. Somalia |
| 8. Guinea | 18. South Sudan |
| 9. Liberia | 19. Tanzania |
| 10. Madagascar | 20. Uganda |



MIDAS

Find out more about the benefits of MIDAS by contacting IOM:

MIDAS@iom.int